

SIGNALLERS CLUB OF CANADA WEBSITE TUTORIAL
HOW TO NAVIGATE THE SIGS CLUB WEBSITE
October 2015



Navigation Menu Page you are on folder structure (Breadcrumbs) Search
Figure 1. Web Site Navigation Tools

Log in:

To access the information on restricted pages, for example Members Only areas, you must log in with your username and password. You do not need to log in to browse the web site. When you require a log in, you will be prompted.

For more details on log in procedure see [How to Log In](#) to see the Restricted Pages tutorial

Search:

This allows you to search using a word etc. For more details see [Search](#).

Page You are on folder structure (Breadcrumbs):

This line will show the folder structure from the Home page to the page you are on. Underlined names are clickable links which will display that page.

Navigation Menu:

This is a menu structure that will expand and collapse to show sub menus when required. Clicking (Normally left-click) on a menu or sub item will bring up the web page for that menu item.

The Navigation Menu allows you to choose which sub section of the web site you would like to see. Clicking on a menu category or sub menu item will display the page for that item.

The menu will expand and show sub menu items as required and collapse the current expanded menu when you click on a different menu item. The current menu category item will be highlighted in colour and the sub menu item when selected will also be in colour. As you hover over a menu category item, the background will turn white except for the current displayed menu category page. When hovering over a sub menu item a black arrow will appear in the lower left of the button except for the current displayed sub menu page.

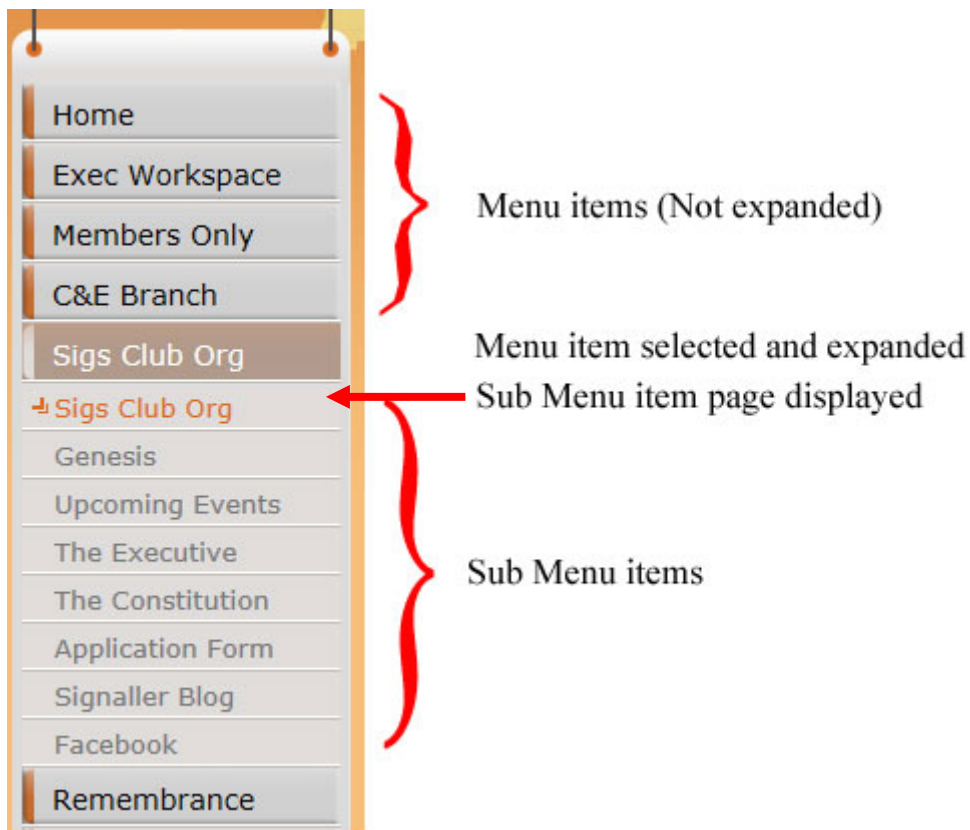


Figure 2. Navigation Menu

When you click on another menu category, the current menu category will collapse and the selected menu category menu will expand as required.

Not all menu category items will expand.

The Page You are on folder structure also known as breadcrumbs will show the folder structure from the Home page to the page you are on. Underlined names are clickable links which will display that page.

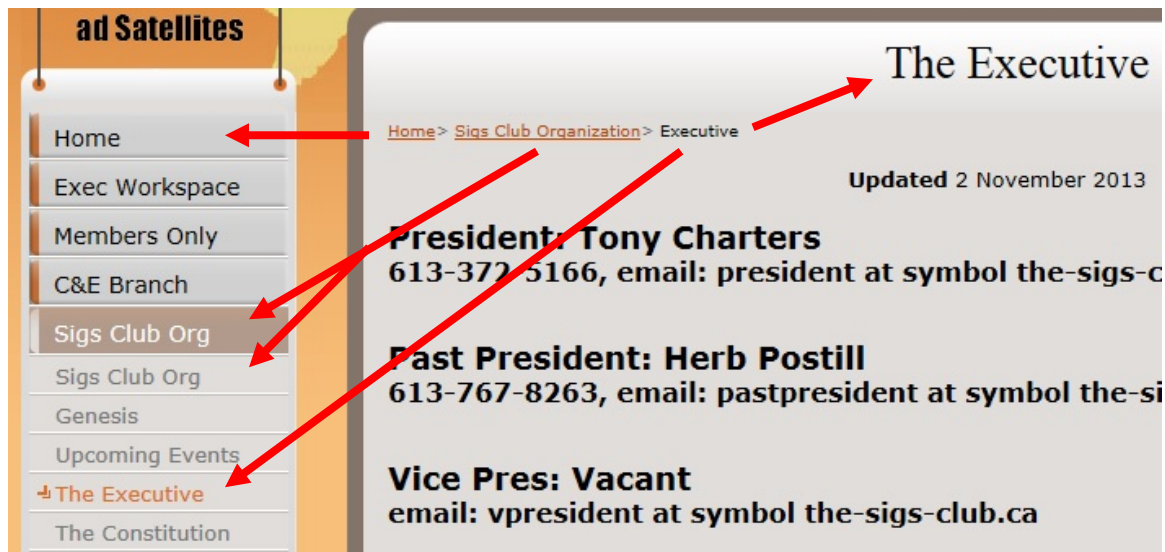


Figure 3. The Page you are on folder structure (Breadcrumbs)

In this example:

Clicking on the breadcrumb **Home** is the same as clicking on the **Home** button in the navigation menu, the Home page will be displayed.

Clicking on the **Sigs Club Organization** breadcrumb is the same as clicking on the **Sigs Club Org** button in the navigation menu, the Sigs Club Organization page will be displayed.

The **Executive** breadcrumb is the page you are displaying as shown in the title of the page - **The Executive** and the **The Executive** button in the navigation menu. There will be no change in the displayed page.

Search Function:

At present the search function has a limited functionality.

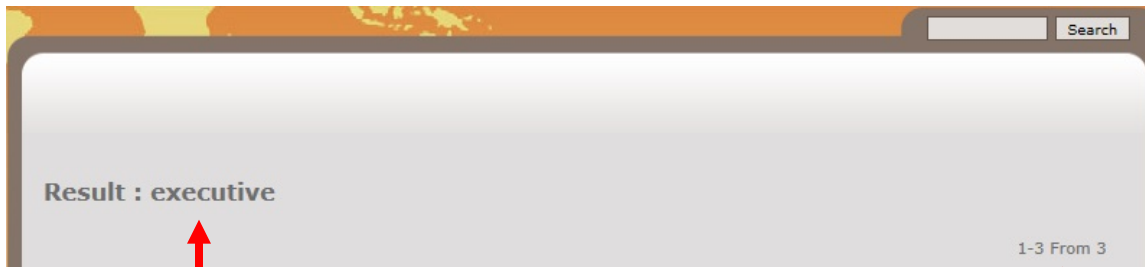
At the top of each web page is a search bar on the right. Type in a word for example executive and click on the **Search** button.



Enter text to search for Click the Search button
Figure 4. Search Function

The number of results will be returned,

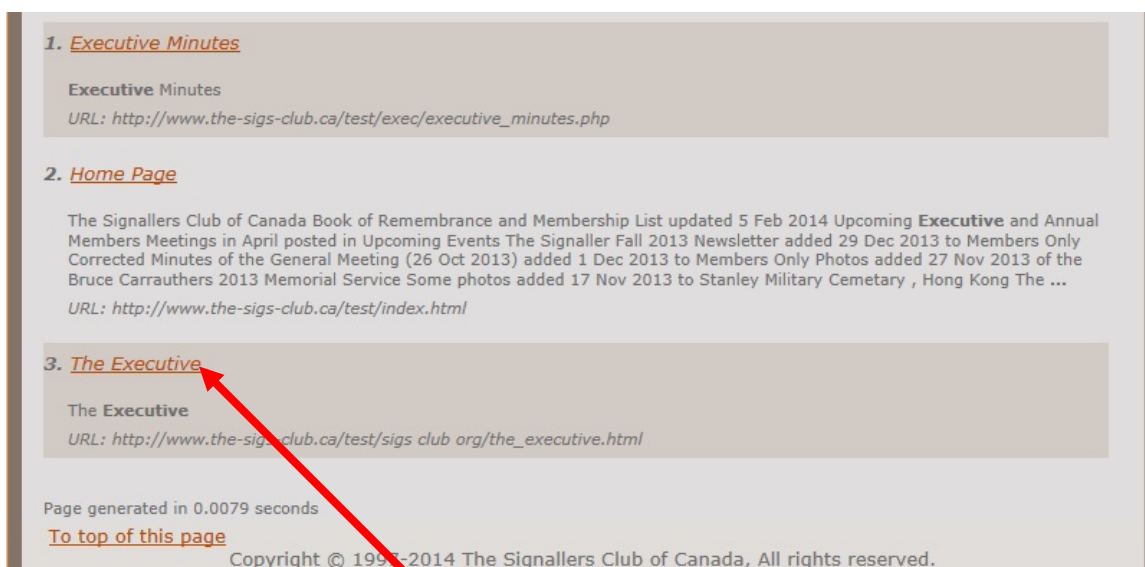
Signallers Club of Canada Website Tutorial – How To Navigate The Website
October 2015



What you were searching for
Figure 5. Number of search results found

Number of results found

Scroll down and a listing of the applicable web pages of the Sigs Club will be listed.



Click on the title to display web page

Figure 6. Search Results Listing

Click on the results title to display that page. (Right Click and Open in New Tab/Window to leave results page and display the web page in a new tab/window.)